



JAMES FISHER AND SONS PLC

Providing integrated solutions for
offshore projects across
the Middle East



DELIVERING OFFSHORE EXPERTISE ACROSS THE MIDDLE EAST

James Fisher has developed unparalleled operational expertise in harsh environments, delivering specialised solutions across the offshore industry.

We pride ourselves on continuously innovating, creating value, and delivering excellence for our customers. Our highly skilled personnel, innovative culture and extensive experience enable us to support customers operating in some of the most demanding and technically challenging environments.

We're able to leverage the strengths of our diverse capabilities to provide fully integrated solutions for marine and offshore projects across their lifecycles, from development to decommissioning.

James Fisher delivers innovation, operational excellence and specialist engineering across the offshore project lifecycle in the Middle East.



DEVELOPMENT

- Well testing solutions
- Site preparation and subsea construction



INSTALLATION AND COMMISSIONING

- Subsea tooling
- Controlled flow excavation



OPERATIONS AND MAINTENANCE

- Artificial lift and subsea connector technologies
- Asset information services
- Crew welfare and vessel performance equipment
- Ship-to-ship transfer services and quality marine products
- Subsea IRM



DECOMMISSIONING

- Offshore decommissioning

DEVELOPMENT

Through the diversity of our unique solutions, we support customers from the beginning of their offshore projects. Harnessing the collaborative strength of our specialist teams, we're there for our customers from the very start, allowing for the seamless execution of offshore projects.

SITE PREPARATION AND SUBSEA CONSTRUCTION

James Fisher Subtech is a trusted partner for technically complex project scopes in harsh environments, offering critical expertise in safe, efficient, and effective delivery.

Excavation and trenching

Drawing on our flexible, in-house tooling capability, our expert teams offer an extensive range of services, including:

- Pipeline and cable trenching / backfilling
- De-burial for emergency repair / IRM works
- Seabed preparation and clearance
- Pre-sweeping preparation
- Rock dump dispersal and removal
- Decommissioning and abandonment work

Flexible product installation

Our skilled team of experienced personnel and specialised equipment optimise safety, productivity, and cost throughout a project.

We offer a full range of flexible product installation services, including:

- | | |
|-------------------------------------------------|-----------------------------------------------------------------------|
| ■ Cable transportation and storage | ■ Remedial works such as articulated piping, rock dumping and matting |
| ■ Platform pull-in operations | ■ Project specific engineering |
| ■ Umbilical and flexibles installation | ■ Route clearance |
| ■ Crossing preparation and installation | ■ Cable burial and de-burial |
| ■ Cable jointing, termination and commissioning | ■ Cable fault management and repairs |
| ■ Pre-lay preparation works and shore pulls | |



For further information about our solutions visit:

WELL TEST SUPPORT

As part of our development offering, we provide well test support packages to assist and protect offshore installations during well test operations. ScanTech Offshore is recognised as the market leader for offshore and well test support services. Renowned globally for its highly knowledgeable and experienced team, paired with purpose-built equipment, we provide solutions that reduce risk, minimise a project's environmental impact, and maximise profit.



AIR COMPRESSORS

The world's largest fleet of Zone II and Rig-Safe air compressors.



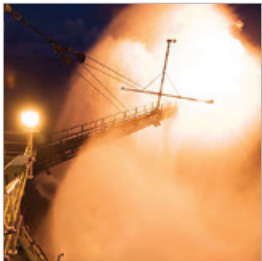
PYROSENTRY

PyroSentry™ was designed for stewardship and to embody an improvement in health and safety for the management of methanol, and other flammable liquids and chemicals.



DRILLING

We supply and operate high-pressure services to support drilling operations.



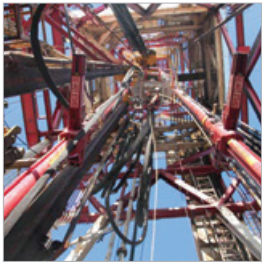
RIG COOLING SERVICES

Our rig cooling services protect personnel and structures from radiated heat in accordance with API 521 standards.



GAS POWER SOLUTIONS

Generate power from Associated Petroleum Gas (APG), which will reduce your carbon footprint, lower your operating costs or monetise waste gas stream opportunities.



SAFETY BAILS

Safety bails are a controllable product that advance the safety of semi-submersibles and drill ships during well testing, completion and workover operations.



HEATERSENTRY

HeaterSentry® is installed between the heat exchanger and return line to the steam generator to detect and mitigate to ALARP the risks of hydrocarbon contamination of the boiler and surrounding areas.



SAND FILTER

Our sand filter has a proven track record in well testing, flow back and clean-up operations.



HEAT EXCHANGERS

Our heat exchangers are carefully designed and selected to provide tangible added value.



STEAM GENERATORS

A robust and reliable fleet of both 6Mbtu Zone II and 4.5Mbtu - 6Mbtu Rig-Safe steam generators.



For further information on our well testing services visit:

INSTALLATION AND COMMISSIONING

James Fisher provides specialist and solutions for the installation and commissioning phase for your offshore projects. Utilising our vast experience and innovative products, our expertise delivers reduced costs and increased efficiencies.

CONTROLLED FLOW EXCAVATION

James Fisher Offshore is the leading provider of controlled flow excavation services worldwide, delivering innovative solutions to its global customer base.

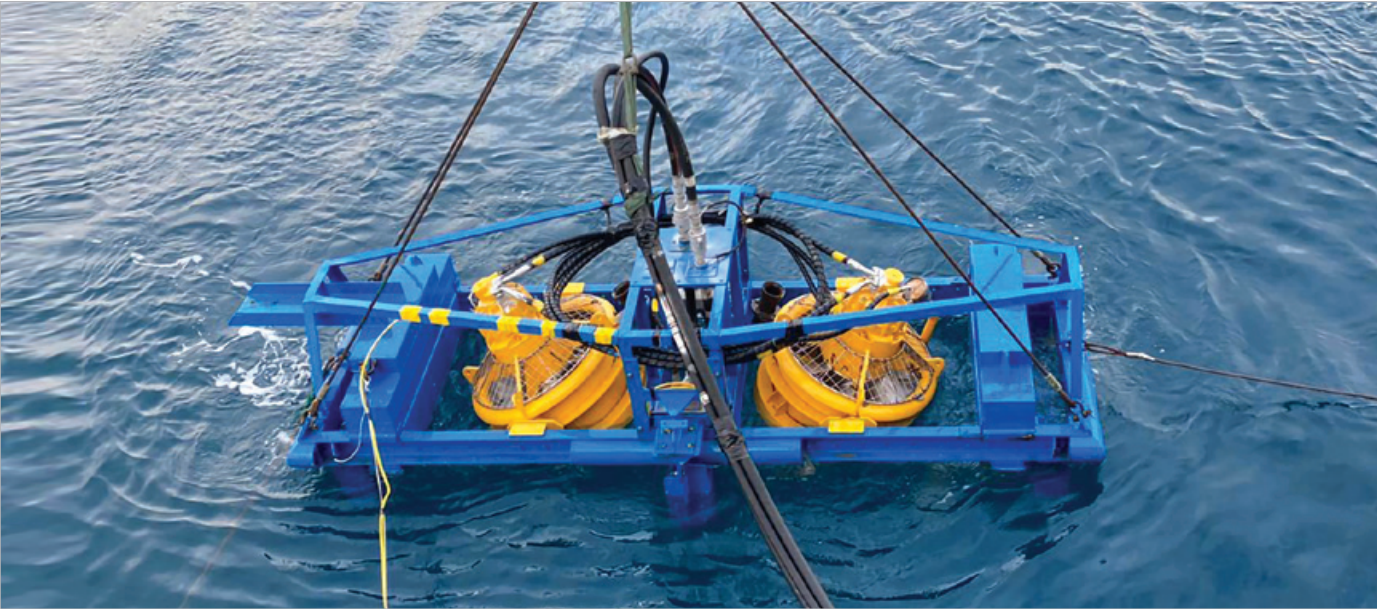
The controlled flow excavation (CFE) team has over 20 years of experience in the subsea excavation sector and is responsible for the successful completion of more than 600 projects in 57 countries. We are committed to delivering quality services and maintaining our position as the market leader in CFE.

Services include:

- Pipeline and cable trenching and backfilling
- Seabed preparation and clearance
- De-burial for IRM activities
- Pre-sweeping preparation
- Free-span rectification
- Rock dump dispersal
- Spud can clearance
- Decommissioning and abandonment work
- Drill cuttings dispersal
- Harbour and channel clearance



For further information on our CFE offering visit:

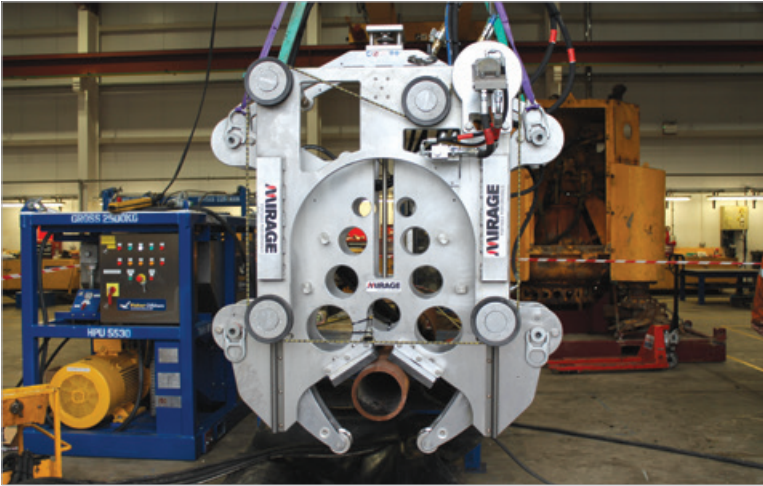


SUBSEA TOOLING

We offer a wide selection of subsea tooling available for rapid delivery across the Middle East, for a range of applications to efficiently facilitate critical offshore projects. Supported by experienced project management and engineering teams, James Fisher Offshore ensures smooth project execution using the best equipment for the job.

Our range of subsea equipment:

- Cutting equipment
- Recovery equipment
- Spare parts and consumables
- Subsea ancillary equipment
- Subsea breakers
- Subsea cleaning power tools
- Subsea drills
- Subsea pumps



LINEAR WINCH

Our specially designed linear winch was created to enable personnel to safely pull in cables or pipelines from offshore to onshore. The linear winch can achieve a higher pull to weight ratio and enables a more controlled pull in operation.



For further information on our subsea tooling visit:

OPERATIONS AND MAINTENANCE

ARTIFICIAL LIFT AND SUBSEA CONNECTOR TECHNOLOGIES

RMSpumptools is an established world leader in electrical submersible pumps (ESP) artificial lift completion technology and subsea connectors, providing the most extensive range of integrated products.

We recently invested in a new facility in The Kingdom of Saudi Arabia to increase our manufacturing and delivery capabilities in the Middle East.



Our products and services:

- Artificial lift monitoring ESP gauges sensors
- Completion systems and intervention tools
- Electrical penetrators and connector systems
- Subsea connector and sensor systems

Our expertise

Our extensive practical knowledge of every aspect of artificial lift applications includes:

- Expert field service support
- Expert high pressure / high temperature product development
- High performance products in challenging / harsh environments
- Sand control – products that protect the ESP
- Stealth product range with slimline and low-profile designs for space restrictions

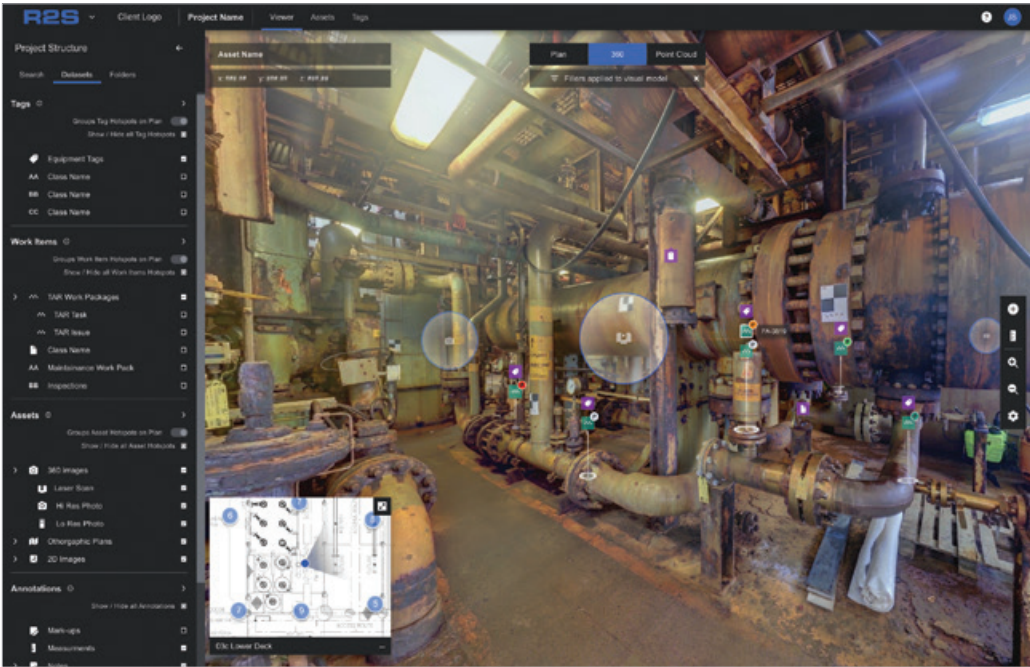
For further information on our artificial lift and subsea connector technologies visit:



ASSET INFORMATION SERVICES

James Fisher Asset Information Services is at the forefront of the digital transformation of oil and gas assets.

The R2S digital twin provides a digital workspace enabling teams to understand the visual context of an asset for the preparation, planning and execution of asset management projects. By layering engineering and project information onto a base of reality data, our application is enabling teams to visually plan and deliver work more effectively.



Watch our R2S video here:



CREW WELFARE AND VESSEL PERFORMANCE EQUIPMENT

Martek Marine offers a comprehensive range of crew welfare and vessel performance equipment, from bespoke gas detection packages to the world's first marine defibrillator, Lifeforce.

Keep your vessels compliant and your crew safe with:

- DrinkSafe – drinking water test kits
- FastCalGas – calibration gas supply
- Fixed gas systems
- Hatchtite ultra-sonic hatch cover testing
- Lifeforce automated external defibrillator (AED)
- Sewage effluent test kits
- The Always Be Calibrated A-B-C™ system - gas detection equipment calibration
- The Triple-C portable gas detector

For further information on our equipment visit here here:



SHIP-TO-SHIP TRANSFER SERVICES AND QUALITY MARINE PRODUCTS

James Fisher Fendercare is the world leader in ship-to-ship (STS) transfers and a major supplier of premium quality marine products around the globe.

Ship-to-ship transfer services

We have the capability and experience to undertake a wide range of STS operations, enabling safe and efficient ship-to-ship solutions, both in port and offshore, including:

- Clean condensate
- Crude, fuel, and gas oil
- Liquified petroleum gas and chemicals
- Naphtha products

Marine products and services

Providing the highest quality marine products and services for a wide range of marine and offshore projects, including:

- Deck equipment: chocks, fairleads, horn cleats
- Engineered fixed fender solutions bespoke to your environment
- Floating fenders
- Floating hose equipment
- Marine anchors, chains, and ropes
- Marine hooks
- Quayside equipment: bollards and bespoke solutions
- Surface and sub-surface buoyancy



For further information on our ship-to-ship or marine products, visit:



SUBSEA IRM

James Fisher Subtech's specialist dive teams have extensive experience and are trusted to install, inspect, and repair the world's critical infrastructure at depth, including confined spaces, nearshore, and subsea.

With a fleet of vessels and specialist equipment, our subsea air and diving services include:

- Provision of portable SRP, surface air and mixed gas diving services
- Portable saturation diving spreads
- Portable HRF to support saturation spreads
- Annual inspection, maintenance and repair surveys
- Spool piece installation
- Riser and J-tube installation
- Scour protection inspection
- Marine growth and debris inspection
- SBM inspection, maintenance and change out
- Free-span rectification
- ROV services



For more information and case studies, scan here:

DECOMMISSIONING

James Fisher Decommissioning offers a complete service capability in the cutting and removal of subsea and platform infrastructure.

Through the combination of knowledge, innovation, award-winning technology and experience we can provide engineering solutions for offshore and subsea decommissioning operations.

OUR CAPABILITIES INCLUDE:

- Structure and jacket removal
- Subsea infrastructure removal
- Well abandonment
- Well severance



Watch our decommissioning video, here:



James Fisher and Sons plc

Pioneering Sustainably



For **well testing support**, please contact:

E: sales@scantechoffshore.com

T: +44 (0) 1651 871 440

For **subsea tooling**, please contact:

E: info@jfdecom.com

T: +44 (0) 1651 873 932

For **asset information services**, please contact:

E: contact@jf-ais.com

T: +44 (0) 1224 355 880

For **decommissioning**, please contact:

E: info@jfdecom.com

T: +44 (0) 779 581 0384

For **marine products and STS transfer**, please contact:

E: sales@fendercare.com

T: +44 (0) 1508 482 691

For **artificial lift and subsea connector technology**, please contact:

E: info@rmspumptools.com

T: +44 (0) 1651 874999

For **crew welfare and vessel performance equipment**, please contact:

E: info@martek-marine.com

T: +44 (0) 1709 599 222

For **subsea construction and IRM services**, please contact:

E: jfsubtech@james-fisher.com

T: +44 (0) 1502 445 730